

LYNNSIGHT



Joyce B. Shelfo
Director of
Donor Relations

FROM THE EDITOR

In this unsettling economic climate, we are especially grateful to our generous donors who continue to show their loyalty, friendship and support to Lynn University.

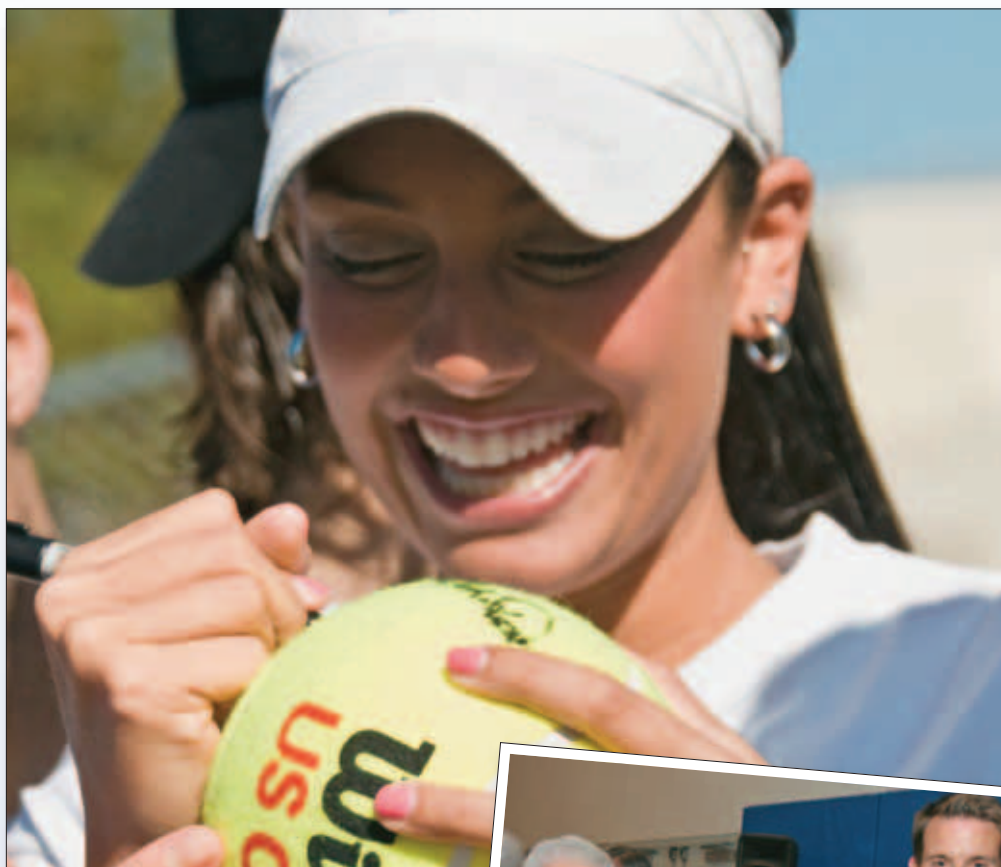
These pages reflect recent gifts from benefactors who make a real difference in the lives of students on the Lynn campus. Our stories begin with Mary and Harold Perper who have supplied the lead gift for the new Perper Tennis Complex. Additional donors have stepped forward to build a home befitting our championship tennis teams.

You'll also read about our students and donors coming together at the annual Benefactors Luncheon to share a meal and an afternoon where students express in person their thanks to the donors who contribute to their education.

And finally, learn how a neighbor's thoughtfulness in hosting a fashion show luncheon in her home fosters the growth of Lynn's performing arts programs.

Joyce

Plans Announced FOR SIX-COURT PERPER TENNIS COMPLEX



Jessica Yanoff '12

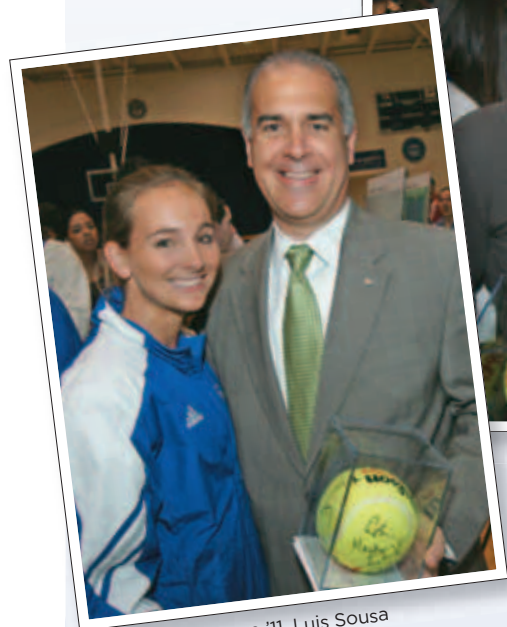
LYNN UNIVERSITY students, faculty, staff, and donors gathered recently to hear the announcement of the future home for one of the country's most successful tennis programs. The Perper Tennis Complex will be a fitting site for Lynn's seven-time national champion tennis program.

Full story continued on page 2



Harold & Mary Perper, Kevin Ross

Plans Announced FOR SIX-COURT PERPER TENNIS COMPLEX



Christine Johnstone '11, Luis Sousa



Leigh Shelton, Kristen Moraz, Dave Gerrits

Cover story: Continued from page 1

President Kevin M. Ross, members of Lynn's men's and women's tennis teams, and tennis coach Mike Perez personally thanked those individuals helping to make the new tennis complex a reality: lead donors Mary and Harold Perper, Dave and Barbara Gerrits, Keith Brown and the Burton D. Morgan Foundation, Luis Sousa, Robert Hackett Jr., Brooks Eden, and Mary Calvin Harrison. These donors have helped Lynn reach 90 percent of its goal for the \$1 million project.

Christine Johnstone '11, a member of the women's tennis team, said, "I speak for the whole team when I say we are more than excited to win matches on the new courts." Johnstone and her teammates presented the donors with oversized tennis balls, autographed by the teams, as a memento of gratitude.



Maria & Brooks Eden, Alisson Siaci '11



The men's team lines up to sign the tennis balls.

Benefactors Luncheon

UNITES DONORS, STUDENTS



Laurence Runsdorf,
Angela Barioli '11

Lynn University hosted its second annual Benefactors Luncheon on Feb. 11 to bring together the donors of endowed scholarships, planned gifts and program enhancements and the students who benefit from their generosity.

Students appreciated the chance to meet face-to-face with their donors and to thank them firsthand for the difference the funding has made in their lives and to the campus. More

than 60 percent of Lynn's students receive financial assistance.

The event, held on campus, featured a video presented by David Jaffe, dean of The Eugene M. and Christine E. Lynn College of International Communication. Musical interludes were performed by student artists in the Conservatory of Music.

In honor of Valentine's Day three days away, students presented their donors with chocolates and yellow roses, a symbol of friendship and caring.



Al Zucaro, Yvonne Boice, Ivana Pancevska '11



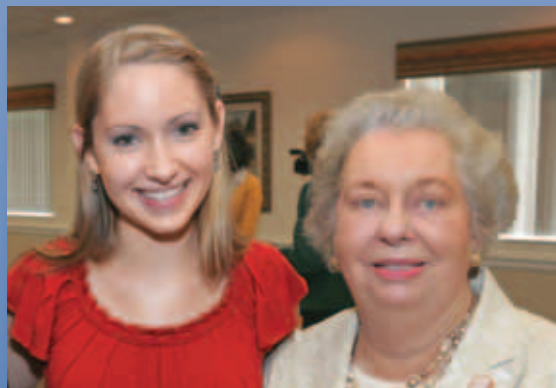
Owen Hughes, Michael Griffith '09, Carole Millstein



Dorothy Bucksbaum, Jay DiPietro, Jonah Kim '10



Valentin Mansurov '09, Phillip Riordan, Florence & Stephen Soble



Brittany Evans '09, Helen Babione

FASHION SHOW, LUNCHEON BENEFIT

Performing Arts at Lynn

Polo Club resident Gail Wasserman graciously hosted a luncheon and fashion show at her home to benefit the Conservatory of Music and theatre arts programs at Lynn University.

She also generously pledged to match all donations received from the event, thereby doubling guests' support of the university.

The poolside luncheon included a performance by a quartet of student-artists from The Lynn University Conservatory of Music, and words of gratitude from Lynn's President Kevin M. Ross, who expressed appreciation to the 60 guests for their donations. The event was highlighted by a spring trend fashion show presented by Neiman Marcus.



Models present the latest spring fashion trends to guests.



Jan McArt, Elaine Wold



Kristen & Kevin Ross, Gail Wasserman, Christine Lynn



Anne Gold, Marilyn Swillinger, Barbara Cohen

LYNNSIGHT is a publication of Lynn University's Office of Development and Alumni Affairs that is used to inform, engage and acknowledge our benefactors. To learn more about how you can make contributions or a planned gift to Lynn University, please call 561-237-7467 or e-mail development@lynn.edu.