

LYNN SIGHT



Martha Gudelsky with son John Gudelsky

One step in keeping with Lynn's strategic plan to become one of America's most noted small universities is to strengthen the faculty. Endowed faculty positions have a transformative impact on academic quality because it helps the university retain the most dedicated and talented professors.

Before she passed away in 2007, Martha Gudelsky established the Homer Gudelsky Endowed Professorship at Lynn University to honor her late husband. After her death, her family completed the final funding of this endowment and renamed it to memorialize Martha Gudelsky as well.

The Homer and Martha Gudelsky Endowed Professorship in Business provides Lynn's largest academic college, the College of Business and Management, with a permanently

\$1.5 MILLION GUDELSKY GIFT ESTABLISHES ENDOWED PROFESSORSHIP IN BUSINESS

endowed faculty position.

When Martha established this endowment in 2006, she was asked why the family foundation selected Lynn as a recipient of its generosity. "We saw tremendous possibilities with Lynn," she said. "Over the years we've watched it grow and transform from an all-girls, Catholic school to a university. Everyone on our board has been to Lynn at one time or another and was very impressed with what they saw there."

Born in Baltimore, Md., Homer Gudelsky was the president and CEO of the family's aggregate businesses in the Washington, D.C. metropolitan area, but was perhaps best known to the public for his innovative and significant real estate developments in the region, including Tysons Corner Regional Shopping Center (Northern Virginia). He and his wife, Martha, established The Homer and Martha Gudelsky Family Foundation, Inc. in 1968 to contribute to charitable programs devoted to improving health, education, the arts and the community.

Supplementing the \$1.5 million Homer and Martha Gudelsky Endowed Professorship in Business, the descendants of Homer and Martha Gudelsky are perpetuating their family's philanthropic legacy with an additional \$300,000 endowment

devoted exclusively to student scholarships. The Martha Gudelsky Memorial Endowed Scholarship provides financial aid to those students who demonstrate exemplary talent and leadership potential, but need financial assistance in order to afford an education at Lynn University (see page 4).

John Gudelsky, Homer and Martha Gudelsky's son, president of The Homer and Martha Gudelsky Family Foundation, and president and CEO of the family's businesses, recently commented, "We are pleased to complete mom's vision for a fully-funded endowed professorship at Lynn University." Regarding the Gudelsky family's additional endowment for student scholarships, John Gudelsky added, "We are also delighted to honor mom's passion for helping especially worthy students who are in need of financial assistance in order to realize all their potential."

Through these two endowments, this extraordinary family has helped secure Lynn University's future success in two critical ways: helping the university attract and retain the most talented professors and by helping the university attract and educate the most promising students.

Endowments *Secure* the future



Joyce B. Shelfo
Director of
Donor Communications

From the Editor

This issue of *LynnSight* focuses on the ever-important endowment gifts to the university.

Our beloved donors have created a variety of endowments (see list on next page) – restricted for a particular purpose or unrestricted for the university’s general endowment.

Endowments help our deserving students pay for tuition, books and supplies; support a professorship or chair; sponsor a lecture series of outstanding speakers; or care for the upkeep of facilities.

These pages reflect the generosity and vision of donors who have made endowment gifts to Lynn University, thereby investing in our students, our community, our world and our future.

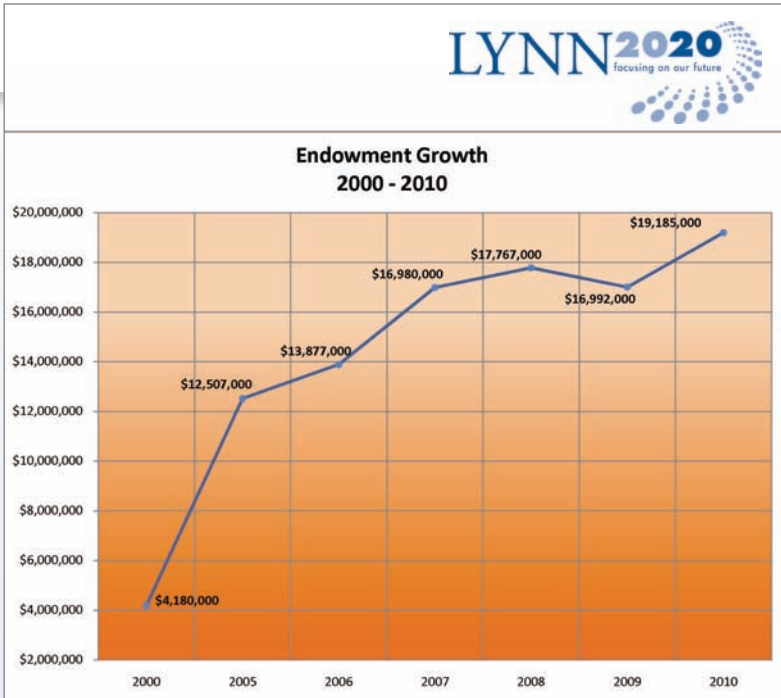
Joyce

WHAT IS AN ENDOWMENT?

Endowment gifts provide an ongoing source of income for Lynn. They function in perpetuity, providing financial support over the long term. The principal amount is never spent. Instead, it is invested to produce interest that generates ongoing income to sustain the university over time. An endowment serves as a permanent named tribute for the donor or one who is honored. It also provides for future generations, continues the tradition of

helping those in need, and perpetuates a donor’s enduring vision. A restricted endowment may only be used for the purpose that is directed by the donor.

Endowed funds are awarded according to a spending policy endorsed by the board of trustees. The award is five percent of the endowed fund’s beginning annual balance, and may not exceed current earnings.



WHAT IS THE LEGACY SOCIETY OF LYNN UNIVERSITY?

The Legacy Society honors the philanthropic leadership and vision of individuals who have provided for the future of the university by including charitable gifts to Lynn in their estate plans.

Through legacy gifts, educational opportunities are provided for current and future generations of Lynn students, having meaning and impact for years to come.

Legacy gifts include a charitable gift annuity, charitable lead trust, charitable remainder trust, life insurance policy, pooled

income fund, retained life estate, retirement plan and bequests through a will or living trust. Too often, these gifts are unrecognized because they come at the end of the donors’ lives. The Legacy Society of Lynn University provides a way to recognize and thank donors during their lifetimes.

Legacy giving at Lynn is a tradition that spans more than 40 years. Currently, the university has planned gifts from 19 living benefactors and nine deceased benefactors.

WHAT’S IN A NAME?

Lynn University welcomes the opportunity to honor those who support the university.

Facilities, spaces, endowments or programs may be named for individuals or entities who generously advance the academic mission of Lynn; further the capacity of the university to meet its teaching and scholarly objectives and to serve its community; and enhance the growth and reputation of the university.

In order for a facility, space, endowment or program to be named based upon a contribution, the gift must be in irrevocable form or to be paid over a period of no longer than five years. Gifts placed into the endowment are invested as a “pooled fund.” These gifts may be either unrestricted or restricted for a particular use but the endowed funds remain in perpetuity. A named, endowed fund begins at \$50,000.

The students, faculty and staff thank all donors who made gifts to these endowments, thereby offering support in perpetuity.

- Anonymous

for general endowment

Burton D. Morgan Endowment

for an aviation director

Burton D. Morgan Endowed Aviation Scholarship

partial assistance to aviation students

Francis W. McMenimen Bickel Endowment

to construct and maintain a library

Gloria and Bryan Bourgeois Endowed Scholarship in Hospitality Management

M. Elizabeth “Maddy” Cumpton Memorial Endowed Scholarship

for conservatory string students

Cottrell Family Endowed Scholarship

for hospitality management students

Ellman Family Endowed Scholarship

for conservatory students

Lynne Fuente Endowed Scholarship

for female students in the graphic design program

The Vanessa Wolff Lumsden Endowed Scholarship in Psychology

Friends of the Conservatory Endowed Scholarship

for conservatory students

Daniel and Shirlee Freed Endowed Scholarship

for conservatory students

Herbert Gleckman Endowed Scholarship

for conservatory students

Martha and Homer Gudelsky Endowed Professorship in Business

Gordon and Mary Henke Endowed Scholarship

for U.S. citizens majoring in international studies

William Randolph Hearst Endowed Scholarship

for students who plan to reside in the United States after graduation

Kyle Martin Memorial Endowed Scholarship

for a junior, senior or grad student in the hospitality management program

Martha Gudelsky Memorial Endowed Scholarship

for students who exhibit leadership potential and financial need

Gloria and Bryan Bourgeois Endowed Scholarship

for hospitality management students
- Nabit Family Endowed Scholarship

for students who exhibit leadership ability

James Oussani Endowed Scholarship

for a business major

Aldo and Sandra Papone Endowed Scholarship

for hospitality management students

Alice and Leigh Palmer Endowed Scholarship

for students in the College of Business

Lynn University Global Citizenship Endowment

for students’ travel for service missions

Postlethwaite Endowed Scholarship

for students in the College of Business and Management

Runsdorf Endowed Scholarship

for students in the College of International Communication

Shirlee’s Violin Scholarship

for full-time violin students

Boice Endowed Scholarship

for students in the College of Business and Management for academic travel

The Stephanie Crispinelli Memorial Endowed Scholarship

for students’ travel for humanitarian missions

Thornbrough Family Endowed Lectureship

for campus lectures in business fields

Harold and Patricia Toppel Endowed Scholarship for the Conservatory of Music

for conservatory students

Keith C. Wold, M.D. Memorial Endowment

for theatre arts program director

Wold Endowed Scholarship

for an off-campus, Palm Beach County resident

Keith C. and Elaine Johnson Wold Performing Arts Center Endowment

for the care of the facility

Warner Family Endowment

for a diagnostician and creation of student learning profiles

George S. Dively Visiting Professorship

for the Dively Frontiers in Globalization Lecture Series

Endowments *create* scholarships

ALDO AND SANDRA PAPONE ENDOWED SCHOLARSHIP



Aldo and Sandra Papone

Last April, the Aldo and Sandra Papone Endowed Scholarship for Hospitality Students was established through a generous gift from the Sandra and Aldo Papone Foundation. The scholarship is awarded annually to students in need, in good academic standing and who have a passion for the hospitality industry. While on campus to lecture to

business students on his book, *The Power of the Obvious*, Aldo Papone was treated to dinner served by Lynn hospitality students with preparation demonstrations by faculty-chef in the culinary lab. The Papones' grandson, Gregory Zambito, is currently enrolled in Lynn's College of Hospitality Management.

GLORIA AND BRYAN BOURGEOIS ENDOWED SCHOLARSHIP



Bruce Bourgeois, Jill Bourgeois Hurst, Bryan Bourgeois '91

Bruce Bourgeois found an innovative way to establish an endowment. Thanks to a 3-to-1 match from his employer's foundation educational matching gift program, he was able to create the Gloria and Bryan Bourgeois Endowed Scholarship in Hospitality Management. Established in the memory of his late wife, Gloria, and in honor of their son, Bryan '91,

this scholarship benefits students in good standing in the hospitality management program. Bryan, a graduate of Lynn's College of Hospitality Management, continues to make good use of his degree, having worked for Four Seasons Hotels & Resorts and currently for The Yas Hotel, Abu Dhabi, United Arab Emirates, as hotel manager.

MARTHA GUDELSKY MEMORIAL ENDOWED SCHOLARSHIP



Martha Gudelsky, David Gergen

The Gudelsky Family Foundation has generously gifted the university to establish the Martha Gudelsky Memorial Endowed Scholarship. This scholarship recognizes Martha Gudelsky's desire to help students who exhibit leadership potential but

need financial assistance to afford an education at Lynn University. Martha Gudelsky is pictured here with political analyst David Gergen following his address on campus during the Dively Frontiers in Globalization Lecture Series in 2007.

In the 2009-10 academic year, 1,260 students received scholarships. Of those scholarships awarded, 81 were endowed.

ENDOWMENTS SUPPORT SERVICE, GLOBAL CITIZENSHIP

In response to the Jan. 12, 2010 Haiti earthquake's devastating effect on the Lynn University community, two endowed scholarships were created to help current and future students afford travel to university-approved and -sponsored humanitarian trips. The first recipients of The Stephanie Crispinelli Endowed Memorial Scholarship and the Lynn University Global Citizenship Memorial

Endowment joined other Lynn students and faculty for travel to Bali for this year's January-term humanitarian mission. The students worked side-by-side with the professors and local citizens in the rice fields, orphanage and classrooms while experiencing firsthand the history, geography, lifestyles and religion of the area.



Stephanie Crispinelli on a Journey of Hope humanitarian mission to Jamaica in 2009

In March 2010, Stephanie Crispinelli's family established **THE STEPHANIE CRISPINELLI ENDOWED MEMORIAL SCHOLARSHIP** to honor her life and her love of education and service. The scholarship is awarded to students who emulate Stephanie's enthusiasm for reaching out to help others and who commit themselves to responsible citizenship in our global society. The scholarship provides tuition and travel assistance for selected students to participate in humanitarian courses.

The **LYNN UNIVERSITY GLOBAL CITIZENSHIP MEMORIAL FUND** was established in March 2010 for deserving students to experience educational and service opportunities that focus on communities in need at the international, national and local levels every academic year. It was created to honor the life and work of the two professors and four students lost while providing service and care to the people of Haiti.

This year, five students who participated in the 2011 J-term Journey of Hope to Bali received scholarship travel assistance.



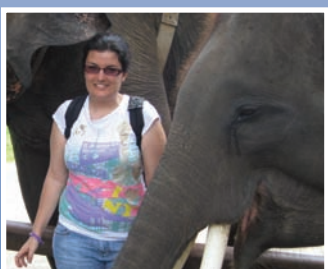
Ryan Brooks and Sarina Peddy in the rice fields



Alejandra Benitez with children at the orphanage



Alannah Wagstaff with student at the school



Alicia Gabriel

Bali was amazing! It was honestly one of the greatest experiences of my life and I learned so much personally, academically...you name it.

Ryan Brooks, recipient
Lynn University Global Citizenship Memorial Fund

I learned a lot about this culture and country and how sometimes we take a lot for granted just because we are so focused on our egocentric and material world that we fail to see what's happening around us.

Alejandra Benitez, recipient
Stephanie Crispinelli Endowed Memorial Scholarship

One of the greatest aspects of the trip was learning about a culture so different from my own through becoming immersed in it. I got to understand the importance of the similarities, rather than differences between the two cultures.

Alannah Wagstaff, recipient
Stephanie Crispinelli Endowed Memorial Scholarship

Endowments *protect* facilities, support programs

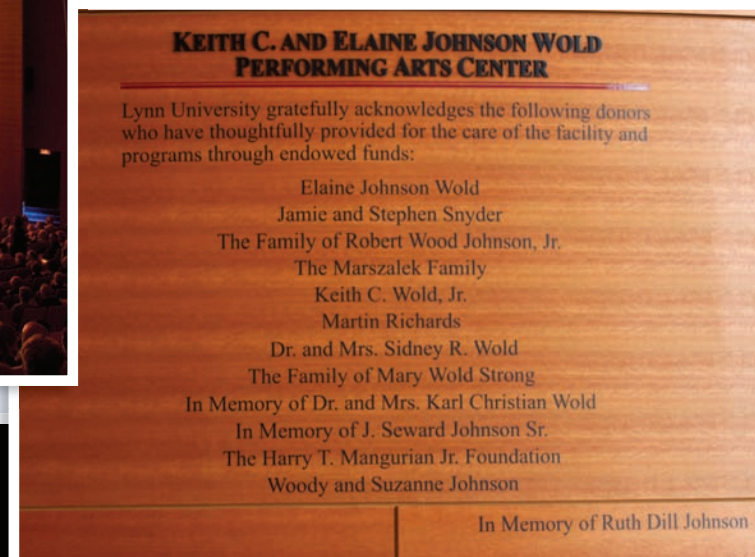
ENDOWMENT KEEPS PERFORMING ARTS CENTER IN LIKE-NEW CONDITION

To ensure that future generations enjoy the charm and excitement of live theatrical, musical and educational programs in the Keith C. and Elaine Johnson Wold Performing Arts Center, trustee Steve Snyder suggested the establishment of an endowment for the care and upkeep of the venue. “We need to start building our endowment funds,”

he said. “I hope that this gift will help the university to accomplish this challenge.” The Snyders were joined by many other benefactors to endow the Wold Center. By establishing an endowment for the facility now, Lynn will have the resources to care for the performing arts center when it is in need of renovation or repair.



Jamie and Steve Snyder



DIVELY SERIES BRINGS OUTSTANDING SPEAKERS TO CAMPUS

Thanks to a generous endowment from the George S. Dively Foundation, Lynn brings to its campus outstanding individuals who have demonstrated exceptional leadership in world markets. The Dively Frontiers in Globalization Lecture Series strengthens Lynn’s academic life through opportunities for dialogue and interaction between students, faculty, the community and prominent speakers. Last year, David McCullough, noted historian and two-time Pulitzer Prize recipient, was the first speaker in the series to appear in the Wold Center.



David McCullough, Juliette Dively



Regina Spence

IN MEMORIAM

Regina “Jean” Spence, who passed away on Dec. 8, 2010, was a longtime friend and benefactor of Lynn University. She was a charter and life member of the Excalibur Society, and had been a consistent donor to Lynn’s annual fund – giving primarily to student scholarships. She also gifted the university with an annuity. Through this annuity, she received a steady cash flow and left an endowed gift to benefit the students and the university for years to come.



Talk with us today about how you may benefit from a life income gift to Lynn University and other gift planning opportunities. Please contact Judi Nelson, vice president for development and alumni affairs, at 561-237-7467 or jlnelson@lynn.edu.

LEAVE IT TO LYNN.

We all want to make a positive difference in the lives of future generations. A decision now to make a planned gift to Lynn will impact education for future students.

Leaving a legacy is personally satisfying. Through a simple estate gift in your will, or through life income vehicles, your planned gift will make a difference.

A planned gift or provision for a future gift to Lynn University may be accomplished through:

- A bequest provision in a will
- A charitable gift annuity
- A charitable remainder trust
- A charitable lead trust

You may direct your planned gift toward endowed scholarships, professorships or programs. That means your name will live in perpetuity at Lynn University.

Make the gift of your lifetime.

For more information, contact Lisa Miller at 561-237-7745 or lmiller@lynn.edu

CHARITABLE IRA LEGISLATION IS BACK!

For 2010 and 2011, donors 70 years of age and older are eligible to transfer up to \$100,000 of their IRAs directly to Lynn University without having to pay income taxes on the money.



Your *gift* today
will help
tomorrow's students.

LYNNSIGHT is a publication of Lynn University's Office of Development and Alumni Affairs that is used to inform, engage and acknowledge our benefactors. To learn more about how you can make contributions or a planned gift to Lynn University, please call 561-237-7467 or email development@lynn.edu.



3601 N. Military Trail | Boca Raton, FL 33431 | www.lynn.edu
Please send comments to Joyce Shelfo: jshelfo@lynn.edu